

# Gas pressure test point series PP

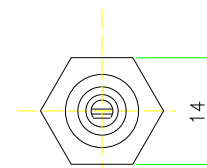
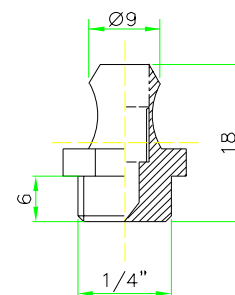
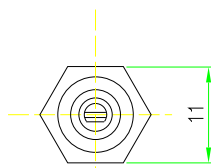
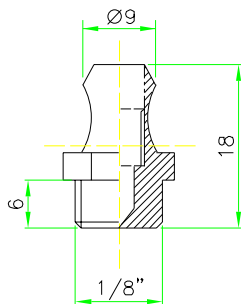
Gas pressure test points of series PP are made in brass and have a threaded screw (niddle) which allows to access to the pressure inside the pipe or valve.

PP is normally used to test pressure inside a pipe or a valve.



## TECHNICAL FEATURES

<b>Material</b>	Brass
<b>Niddle</b>	Brass
<b>Niddle fastening</b>	Flat-blade screwdriver
<b>Thread connection</b>	1/8" and 1/4"
<b>Max pressure</b>	3 bar



All the reported data are subject to be changed without notice.

from 140909