

Two-way manual pressure cock with bleed-off

The manual pressure gauge valve enables, by pushing the button, to check the existing pressure when testing the system.

By releasing the button, the valve automatically closes; the manual pressure gauge returns to 0 setting and to rest position, remaining protected from water hammers, accidental overpressure, etc.

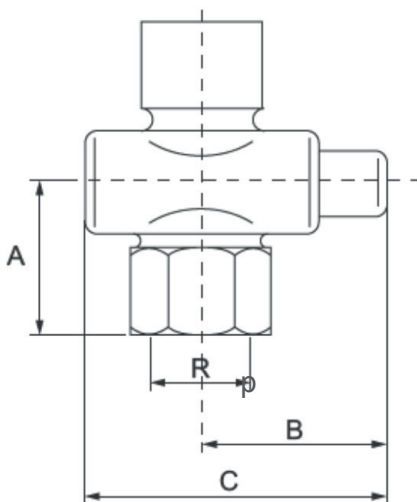
These pressure cocks have the **CE** certificate according to norms EN331.



TECHNICAL FEATURES

Body material	Press-forged nickel-plated brass CW617N
Button and cap material	Press-forged nickel-plated brass CW614N
O-ring	NBR 70 Sh
Thread connections	Rp 1/4, 3/8 and 1/2
Fluid	Gas, air
Max pressure	5 bar
Temperature	From -10 °C to + 70 °C

FEATURES



Diameter Rp	Max pressure in bar	Code
1/4	5	RUB1/4
3/8	5	RUB3/8
1/2	5	RUB1/2

Diameter Rp	A	B	C
1/4	23	29	54
3/8	23	29	54
1/2	34	50	77,5

All the reported data are subject to be changed without notice.

from 200325