

Gas ball valve series SF

Gas ball valves of series SF can be supplied with thread or flange connections are suitable to shut-off gas belonging to the first, second and third family and also liquid gas. They are **CE** certified according to norm EN331 for the thread version and according to norm EN13774 for the flanged version.

They are available from Rp 1/4" to 2", full bore or reduced bore, with thread connection according to ISO 7/1 and flanged from DN15 to DN250 according to norm EN1092-2, PN16.

They are equipped with yellow colour for manual operation and on request they can be motorized with electric or pneumatic actuator.



TECHNICAL FEATURES

| | |
|-------------------------------|---|
| Body of thread valve | Nichel plated brass |
| Body of flanged valve | Cast-iron GJS 400-15 |
| O-ring | NBR |
| Seat | PTFE |
| Max operating pressure | 5 bar thread valve / 16 bar flanged valve |
| Operating temperature | - 20 ÷ +60°C |
| Thread connections | Rp 1/4 ÷ Rp 2 |
| Flanged connections | DN15 ÷ DN200 |
| Lever | Steel surrounded by PVC |

FEATURES

- Full bore or reduce bore (on request)
- Thread connection F/F or M/F
- Version with lockable lever
- Lever or butterfly in yellow colour

SF = Thread ball valve
SFF/ = Flanged ball valve

100/ = Full bore
151/ = Reduced bore
230/ = Top flange F03/04

Diameter

| Thread | Flanged |
|----------------------|---------------------|
| 06 = Rp 1/4 | 15 = DN 15 |
| 09 = Rp 3/8 | 20 = DN 20 |
| 15 = Rp 1/2 | 25 = DN 25 |
| 20 = Rp 3/4 | 32 = DN 32 |
| 25 = Rp 1 | 40 = DN 40 |
| 32 = Rp 1.1/4 | 50 = DN 50 |
| 40 = Rp 1.1/2 | 65 = DN 65 |
| 50 = Rp 2 | 80 = DN 80 |
| | 100 = DN 100 |
| | 125 = DN 125 |
| | 150 = DN 150 |
| | 200 = DN 200 |

Model

/FF = Female / female
/MF = Male / female
/LU = lockable
/AN = ANSI flange

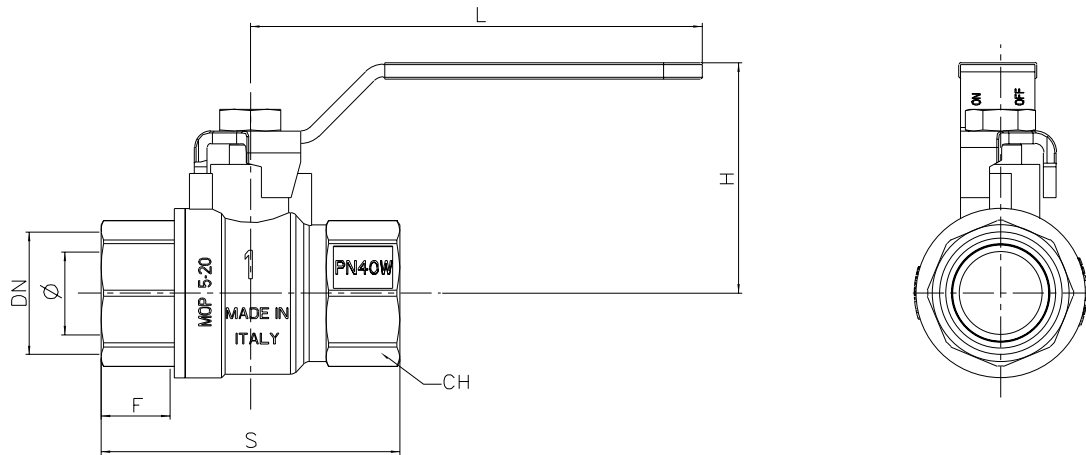
SF

100

40

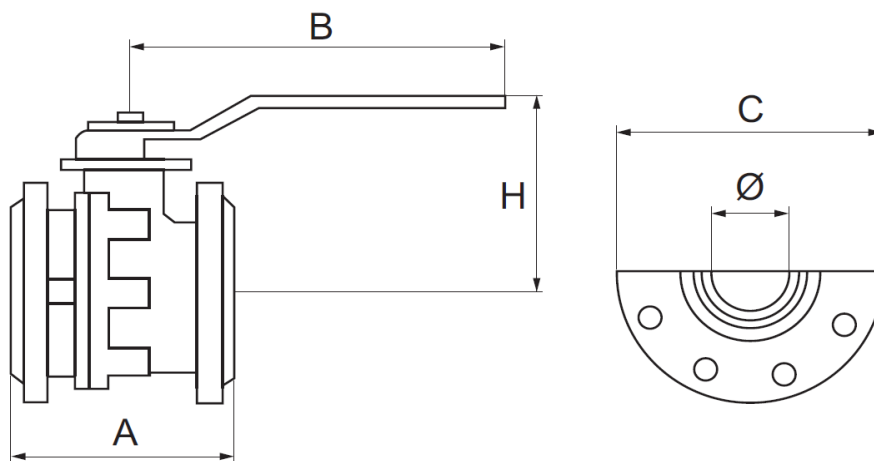
/FF

DIMENSIONS



Dimensions (mm)

| DN | 1/4" | 3/8" | 1/2" | 3/4" | 1" | 1 1/4" | 1 1/2" | 2" |
|----|------|------|------|------|-----|--------|--------|-----|
| Ø | 10 | 10 | 15 | 20 | 25 | 32 | 40 | 50 |
| F | 10 | 10 | 15 | 16 | 19 | 21 | 21 | 26 |
| S | 45 | 45 | 60 | 70 | 83 | 98 | 108 | 130 |
| H | 41 | 41 | 41 | 50 | 54 | 66 | 72 | 86 |
| L | 80 | 80 | 90 | 111 | 111 | 140 | 140 | 170 |
| Ch | 21 | 21 | 26 | 31 | 38 | 48 | 55 | 68 |



Dimensions (mm)

| DN | 15 | 20 | 25 | 32 | 40 | 50 | 65 | 80 | 100 | 125 | 150 | 200 |
|-------------|-----|-----|-----|-----|-----|-----|------|------|------|-----|------|------|
| Ø | 15 | 20 | 25 | 32 | 40 | 50 | 63 | 76 | 95 | 120 | 145 | 190 |
| A | 115 | 120 | 125 | 130 | 140 | 150 | 170 | 180 | 190 | 200 | 210 | 400 |
| B | 160 | 160 | 170 | 170 | 230 | 230 | 230 | 280 | 360 | 450 | 560 | 1000 |
| C | 95 | 105 | 115 | 140 | 150 | 165 | 185 | 200 | 220 | 250 | 285 | 340 |
| H | 84 | 84 | 96 | 101 | 125 | 135 | 143 | 165 | 180 | 225 | 243 | 320 |
| Weight (Kg) | 2,6 | 3,3 | 4,2 | 5,8 | 7,5 | 9 | 10,5 | 15,5 | 18,5 | 28 | 38,5 | 93 |

BALL VALVE WITH ACTUATOR

Threaded and flanged ball valves can be supplied with pneumatic or electric actuator.



All the reported data are subject to be changed without notice.

from 180308

econex

Econex s.r.l. - Via Francesco De Sanctis, 53 - I-20141 Milano
Tel. +39 0289502912 - Fax +39 028463084 - www.econex.it - info@econex.it