



econex

**COMPONENTI
& ACCESSORI**
PER IMPIANTI DI COMBUSTIONE

**COMPONENTS
& ACCESSORIES**
COMBUSTION SYSTEM

COMPONENTI ED ACCESSORI PER IMPIANTI DI COMBUSTIONE

COMPONENTS AND ACCESSORIES FOR COMBUSTION SYSTEM

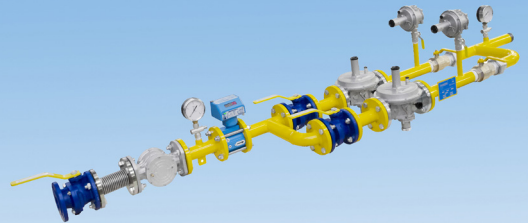
Rampe gas o aria complete e già assemblate per applicazione su forni industriali, per la riduzione della pressione del gas o la miscelazione di vari tipi di gas. Costruzione e collaudo secondo le norme EN746 e certificate PED. Diametri delle tubazioni da Rp 1 a DN 200.

Complete air and gas train assembled for industrial furnace application, for gas reducing pressure stations and for various gas mixing. Manufacture and test performed according to norms EN746 and PED. Pipe size from Rp 1 to DN 200.

Gas train on skid



Gas train with flowmeter and by-pass



Gas train with control panel



Gas train with tightness control



ELETTROVALVOLE SINGOLE, DOPPIE E GRUPPI MONOBLOCCO

SINGLE, DOUBLE AND MONOBLOC SOLENOID VALVES

Valvole elettromagnetiche di sicurezza singole, doppie, di sfiato, a doppio stadio e gruppi monoblocco. Pressione massima da 200 mbar a 6 bar, diametri da Rp 3/8 a DN200, alimentazione da 12V cc a 230V ca. Disponibili anche in versione Atex zona II 3G-3D.

Single safety solenoid valves, double, vent valves, double stage and valve assembly groups. Max pressure from 200 mbar to 6 bar, diameters from Rp 3/8 to DN200, supply voltage from 12V dc to 230V ac. Available also in Atex version zone II 3G-3D.



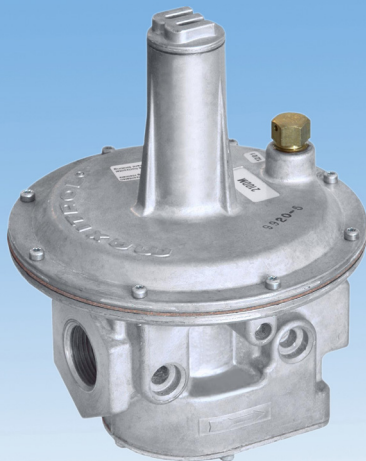
STABILIZZATORI E REGOLATORI DI PRESSIONE

GOVERNORS AND PRESSURE REGULATORS

Stabilizzatori e regolatori di pressione, proporzionatori e zero governor e valvole di sfioro. Max pressione ingresso fino a 8 bar, diametri da Rp 1/2 a DN200.

Pressure governors, regulators, proportionator and zero governor and relief valves. Max inlet pressure 8 bar, diameters from Rp 1/2 to DN200.

RV



RG-FRG



ALFA



RG/2MBZ



ATTUATORI ELETTRICI ELECTRIC ACTUATORS

Attuatori elettrici da 2 Nm a 500 Nm con comando a tre punti oppure proporzionale con segnale 4-20 mA o 10V cc, alimentazione da 24V cc/ca a 230V., tempo di rotazione da 7 a 240 secondi. Disponibili anche nella versione ATEX zona II 3G-3D e ATEX zona 1.

Electric actuators from 2 to 500 Nm, three point or proportional control with input signal 4-20 mA or 0-10V dc, supply voltage from 24V dc/ac to 230V., rotation time from 7 to 240 seconds. Available also in ATEX version zone II 3G-3D and ATEX zone 1.

AB1



AR2



AR4 ON-OFF



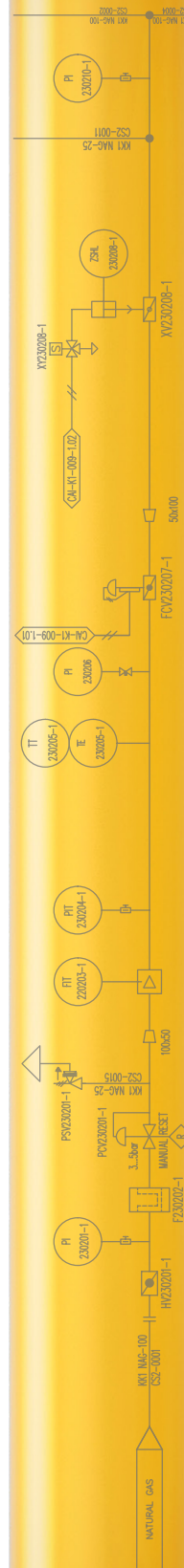
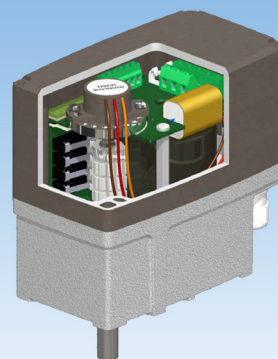
AR4 Modulante/ Modulating



AG8



AT/AN



VALVOLE A FARFALLA PER ARIA, GAS E FUMI AD ALTA TEMPERATURA

BUTTERFLY VALVE FOR AIR, GAS AND FUMES FOR HIGH TEMPERATURE

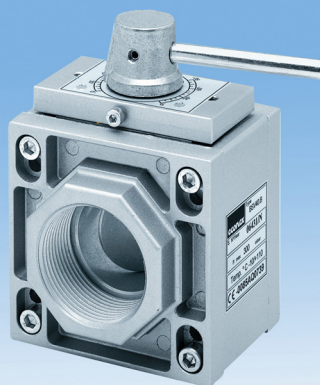
Valvole a farfalla tipo wafer e filettate in alluminio per aria e gas, diametri da Rp 3/4 a DN250 e valvole a farfalla wafer o flangiate per alte temperature fino a 1000 °C, diametri da DN15 a DN5000.

Wafer and thread butterfly valves in aluminium for air and gas, diameter from Rp 3/4 to DN250 and wafer or flanged butterfly valve for high temperature up to 1000 °C, diameters from DN15 and DN5000.

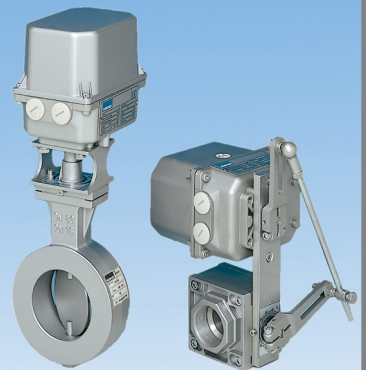
BFV



BSV



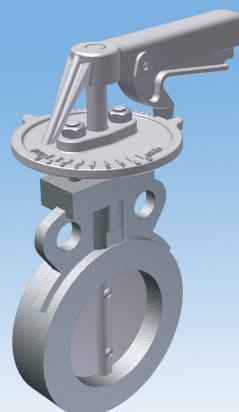
BFV-BSV/AB1



BFVS



GD(H)-LDK



VFMM



VALVOLE DI REGOLAZIONE MODULANTI PER ARIA E GAS

AIR AND GAS MODULATING LINEAR CONTROL VALVES

Valvole di regolazione lineare per aria e gas motorizzate, massima pressione ingresso 0,5 - 1 bar, diametri da Rp 1 a DN100.

Linear motorized control valve for air and gas, max inlet pressure 0,5 - 1 bar, diameters from Rp 1 to DN100.

MPV



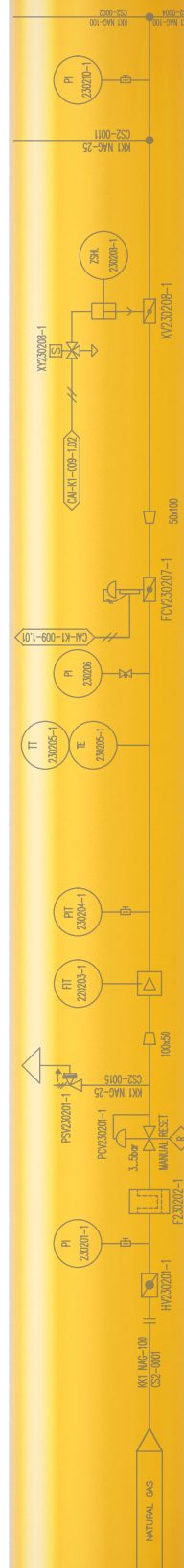
MPV-AR4



MDV-B1



MDV-D1



GIUNTI ANTIVIBRANTI E FLESSIBILI, VALVOLE A SFERA E FILTRI

COMPENSATORS AND FLEXIBLE HOSE, BALL VALVES AND FILTERS

Giunti antivibranti filettati e flangiati per gas, valvole a sfera filettate da Rp ¼ a Rp 2 e flangiate da DN15 a DN200 e filtri per gas da Rp 1/2 a DN200, pressione massima 2 o 6 bar.

Thread and flanged compensators for gas, flexible hoses, thread ball valves from Rp ¼ to Rp 2 and flanged from DN15 to DN200, gas filters from Rp 1/2 to DN200, max pressure 2 or 6 bar.

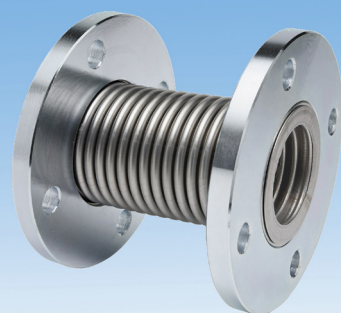
AF



GMM



GFL



SF



SFF



FE

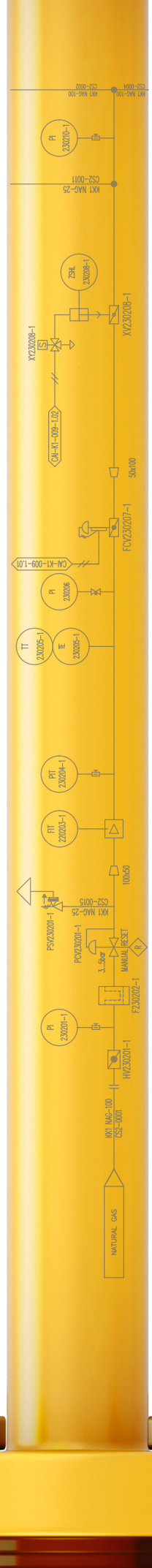
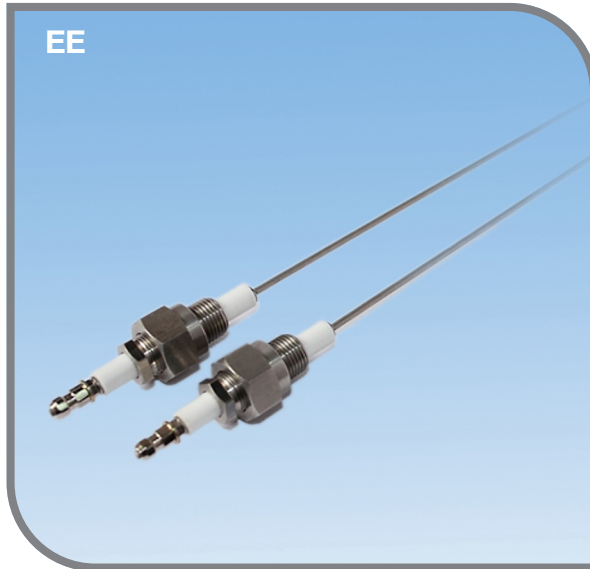
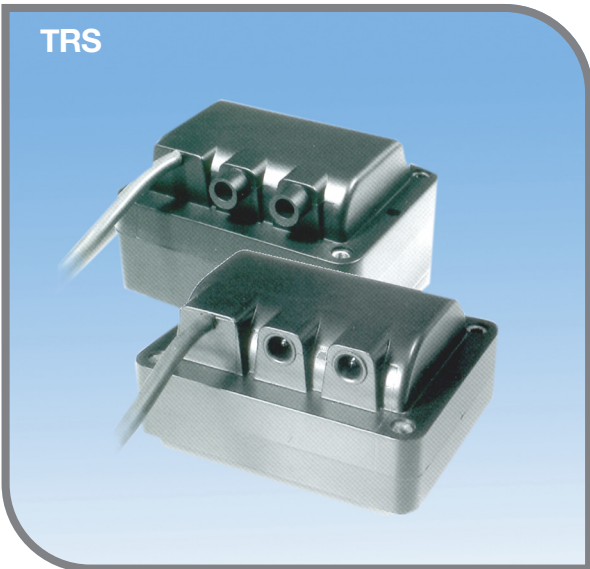


PRESSOSTATI, TRASFORMATORI DI ACCENSIONE ED ELETTRODI

PRESSURE SWITCHES, IGNITION TRANSFORMERS AND RODS

Pressostati per pressione positiva e differenziale, trasformatori di accensione tradizionali ed elettronici, elettrodi di accensione e di rivelazione fiamma.

Positive and differential pressure switch, ignition transformers winded or electronic, rods for ignition and flame detection.



MISURAZIONE DEL GAS: MANOMETRI E QUANTOMETRI

GAS MEASUREMENT: PRESSURE GAUGES AND QUANTOMETER

Manometri per la misurazione della pressione con scale in mbar e bar, rubinetti a pulsante e quantometri a turbina non fiscali e misuratori massici per la misurazione dei consumi di gas.

Dial pressure gauges measuring pressure with scale in mbar or bar, pressure cock with bleed-off and turbine gas flow meter and mass flow meter for gas consumption measuring.

MA



RUB



CPT-01



QT



QA-QAE



Massico/
Mass flow meter



DISPOSITIVI DI CONTROLLO FIAMMA, TENUTA E ALTRI ACCESSORI

CONTROL DEVICE: FLAME AND TIGHTNESS AND OTHER ACCESSORIES

Pannello controllo fiamma per bruciatori industriali monostadio o bistadio, dispositivi di controllo di tenuta delle elettrovalvole, valvole di regolazione micrometrica, prese prova di pressione, fotocellule UV ed altri accessori per la combustione.

Flame control device for single stage or dual stage industrial burners, tightness control as proof of tightness among solenoid valves, micro-flow regulation valves, pressure test points, UV cells and other accessories for combustion.

EFC



MTC10



MFC



UV4



The image features a technical drawing background of industrial machinery, including pipes, valves, and flanges. A prominent yellow graphic element, resembling a thick pipe with several joints, forms a large, stylized 'C' shape that frames the central text. The word 'econex' is written in a bold, blue, lowercase sans-serif font, centered within the 'C' shape.

econex

Econex s.r.l. - Via A. Einstein, 2 -20057 Assago (MI) - Italy
Tel. +39 0289502912 - Fax +39 028463084 - www.econex.it - info@econex.it